

CHÂTEAU ROYAL D'AMBOISE





PARIS

AMBOISE

COMING TO AMBOISE

- **By train from Paris:**
TGV → Tours (1h)
TER → Amboise (2h)
- **By train from Tours:**
TER → Amboise (20min)
- **By car from Paris:**
→ Amboise (2h30min)

LOIRE VALLEY AND ITS CHÂTEAUX



ALL ROADS LEAD TO AMBOISE

Leave your motorized vehicle aside and get on your bike along the royal river! Many ways marked from Amboise Val of Loire await you. In the city, for your travel comfort: bicycle rental, lockers and luggage delivery by our partners.

Practical information:

www.loireavelo.fr
www.amboise-valdeloire.com



Royal castle of Amboise

Castle of Chenonceau

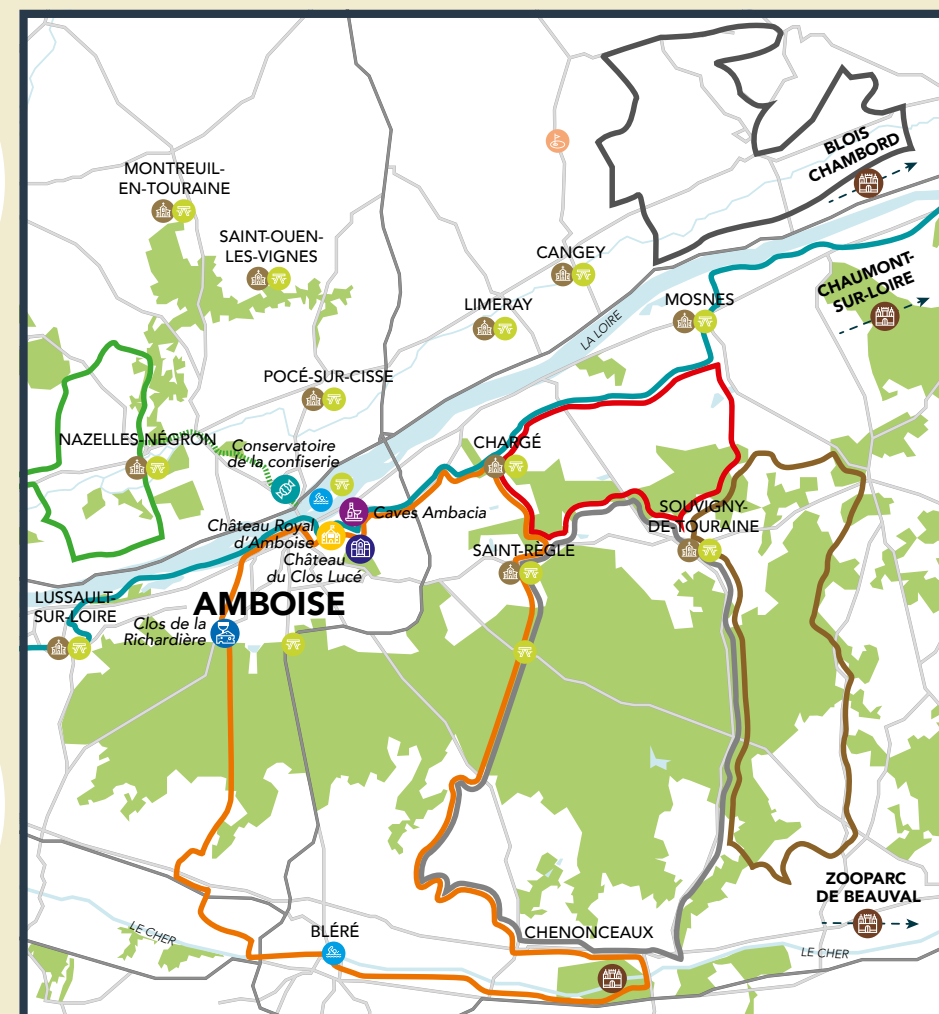
Royal castle of Blois

The big challenge

22 kms from Amboise

35 kms from Amboise

Heading towards the ocean, 282 kms from Amboise



CYCLING ROUTE:

- The Loire by bike
- Loop 12 - 12.5 km
- Loop 19 - 26 km
- Loop 20 - 36 km
- Loop 44 - 30 km
- Loop 45 - 17 km
- Loop 47 - 45 km

PRACTICAL INFORMATION:

- Picnic areas
- Churches
- Castles and remarkable sites
- Swimming places
- Swimming places

AMBOISE,

SHARE THE KINGS' EMOTIONS



FRANCIS 1ST

RENAISSANCE

TOMB OF
LEONARDO DA VINCI

FRENCH-STYLE LUXURY

A BALCONY
ON THE LOIRE

GARDENS

HISTORY
OF FRANCE

LANDSCAPE

RESIDENCE OF THE
KINGS OF FRANCE



THE MOST BEAUTIFUL PANORAMA IN THE LOIRE VALLEY

Suspended between the sky and the Loire, the royal château of Amboise's terraces form an exceptional balcony overlooking the UNESCO World Heritage landscape.

Offer your clients this picture-postcard view, which will be the highlight of their trip.

THE RENAISSANCE PALACE OF THE FRENCH KINGS

Pomp, beauty, creativity, and extravagance... When the kings of France decided to create superb palaces inspired by the Italian Renaissance, their architects designed architectural jewels. Do not miss the opportunity to share a discovery of Amboise, the favourite château of king Francis 1st.

THE LOCATION OF LEONARDO DA VINCI'S TOMB

One of the most famous geniuses in the history of humanity rests in peace in the royal château of Amboise. A universal character, Leonardo da Vinci is the natural point of reference for all your clients, from France or other countries, when they imagine the Renaissance. Discovering his tomb will certainly be a key moment of their stay in the Loire Valley.



TO BE NOTICED

- Amboise, stopover and residence of the sovereigns of France from the 15th to the 19th century.
- The childhood garden of the princes and princesses of France.
- Burial site of Leonardo da Vinci.
- A destiny that merges with the History of France and European History.

THE SAINT-HUBERT CHAPEL

AN ARCHITECTURAL GEM

IN THE PRIVACY

OF THE SOVEREIGNS OF FRANCE

Duration of visit: 1h



New
museography

Throne from the end of the 15th century, Great Hall

The death of Leonardo da Vinci
by François-Guillaume Ménageot,
king's bedroom

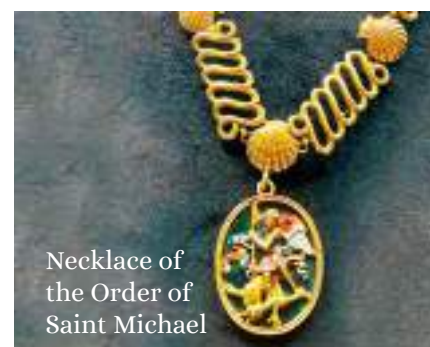


The Saint-Hubert chapel shines brightly again.

After almost three years of a vast restoration project, the chapel reopened its doors to visitors in June 2024. This jewel of Renaissance architecture houses the tomb of Leonardo da Vinci. The result of this restoration is absolutely fascinating: from the rediscovered dazzling whiteness of stones on the facades of the roof, whose gilding once again illuminates the arrow. We will not miss to observe the magnificent cover in lead whose deep tint contrasts wonderfully with the sky above the castle. And then, there is the carved stone lintel located just above the door: take the time to go through it to appreciate all

the details. Inside, splendid stained glass windows bathed in light with decorations sculpted with incredible finesse, patiently restored by the best French craftsmen (more than 200 elements have been returned), the spectacle is total. This lace stone has patterns of a great variety and great delicacy: inspired decors religious obviously, but also numerous small animals (beetle, birds, monkeys, snakes, wolves, etc.). **In this setting, the tomb of Leonardo da Vinci constitutes more than never an essential step in a visit to the royal castle of Amboise.**

During the visit, discover an exceptional collection of Gothic and Renaissance furniture. Linger in the Great Hall where royal audiences and banquets were held, before taking the prestigious cavalier towers and admiring their architectural singularity, unique in the Loire Valley.



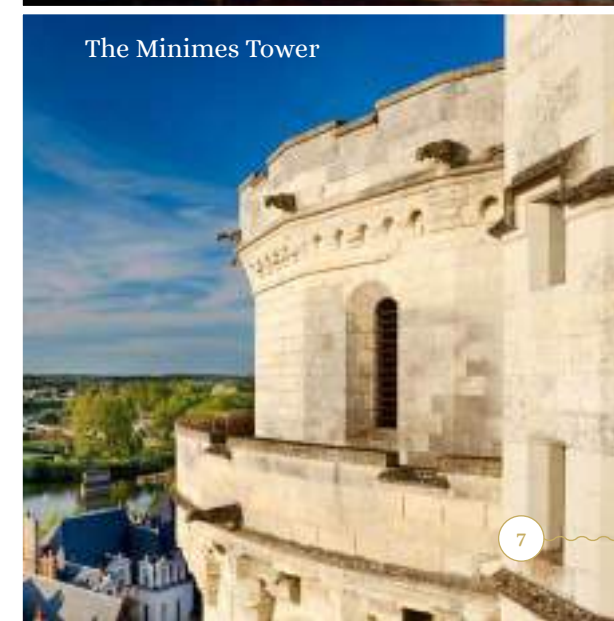
Necklace of the Order of Saint Michael



Bust of Louis-Philippe the First



Great bedroom



The Minimes Tower

THE HISTOPAD®,

A VOYAGE IN TIME

Two journey times



The latest generation **HistoPad** technology makes it possible to spectacularly enrich the discovery of the Royal Château of Amboise with 3D recreations of the buildings and interior décors, and the 360° recreation of court life scenes.

This tool, included in the château entrance price. Average duration of visit: 90 min. Written commentary in 12 languages.

- For group guided visits: the **HistoPad Pro** can be used by our lecturer guides or by your tour leaders (with pre-training).
- For your individual or group clients: a **HistoPad Solo** will be issued at the ticket office (Booking required for groups).



TAYLOR

YOUR VISIT TO YOU

Visit of the Royal Loggia and the St. Hubert Chapel (Leonardo da Vinci's tomb) - 1 hour



• Visit with *HistoPad*



• Visit with visitor guide

(adult guide available in 15 languages/New version 2025: FR and GB 01/01/2025, other languages 03/01/2025).



(visitor guide for children, from 3 to 6 years old in 2 languages)



• Commentated visit with a lecturer/guide of the Loggia and the chapel in 6 languages (supplement payable, booking required).



• Welcome for accompanied groups

External guides/accompanying adults are welcome on-site. They must follow the instructions issued by the Château personnel. There is the choice of a *HistoPad Pro* for your guide/tour leader, an individual *HistoPad Solo* (12 languages) **booking required** or a visitor guide (15 languages).

"Behind the scenes of History"

1 hour



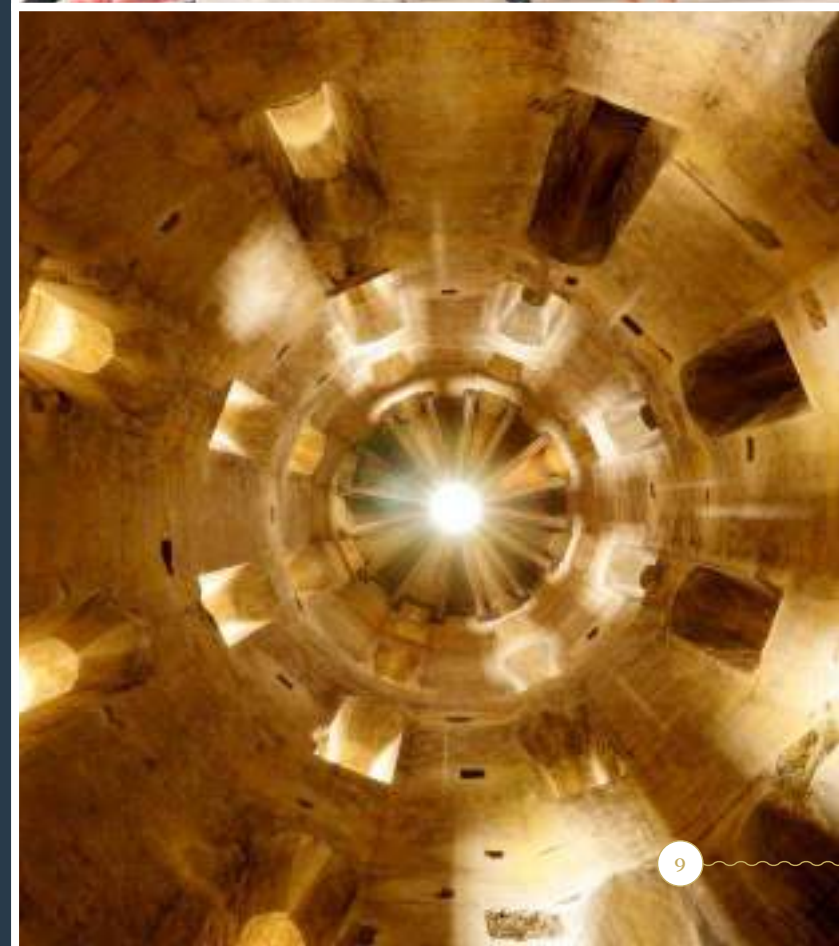
Combined guided visit of the underground passageways and the Royal Lodge. Exclusive access to the underground passages and to the towers of the medieval fortress situated under the Renaissance Lodge in 6 languages (with supplement, booking required, max. 18pp per group)

Historical tour of the gardens

45 min



Reservation required.



EXHIBITION

CHRISTMAS 2025

THE GARDEN

MEDITERRANEAN-INSPIRED

Duration of visit: 30/40 min.



“Christmas, childhood dreams” Sharing magical memories

At the Royal Château of Amboise, the young Renaissance princes celebrate the Nativity festivities. Now 500 years later, this tradition continues. Each year, the magical “Christmas, childhood dreams” decorations arrive to enrich the permanent collections. It’s an opportunity

for all generations to come together through Christmas memories and imagery. Magnificent scenography installed throughout the visitor route.

Visitors can enjoy this spectacle every day for one month (except the 25/12 and 1/01) with no supplement payable.

“Christmas in the land of the châteaux”

Over the course of one month, seven great châteaux (Amboise, Azay-le-Rideau, Chinon, Chenonceau, Langeais,

Loches and Villandry) celebrate with exceptional visitor routes and entertainment. This is “Christmas in châteaux country” in Touraine.

www.noelaupaysdeschateaux.com



A New
theme
every year!



- A new alternative to traditional Christmas markets
- Each château has its own theme
- Wide range of activities and events

Covering 2 hectares, Amboise’s gardens offer exceptional panoramic views across the Loire. Numerous species of Mediterranean plants, a symbol of the Italian influences at Amboise, invite you on a journey.

Faced with climate change issues, the gardens must reconcile the need

for freshness, a measured approach to watering and the lack of agrochemical use.

Classified as a “Remarkable Garden” since 2019, the château of Amboise gardens combine beauty and best practice. They reflect the ancestral art of living in the Loire Valley.



- “Remarkable Garden”
- French Bird Protection League Refuge (LPO)
- Reasoned and eco-responsible management
- Eco-grazing
- Waste sorted for recycling
- “The birds of the park” tour





- A château in the heart of town, with its shops and a wide choice of accommodation.
- Direct, easy access:
 - 2h30 from Paris,
 - train station a 15-minute walk,
 - 3 hours from Paris, Drop-off and free parking nearby,
 - “Loire à Vélo” (Loire Valley cycling routes).
- Many activities to enjoy locally.

- | | |
|-------------------|---------------------|
| Pedestrian access | Train station |
| Tourist office | Free car parking |
| Camping | Pay car parking |
| Hospital | Free bus parking |
| Monuments | Camping car parking |

- Pedestrian streets all year round
- Pedestrian streets in summer
- Pedestrian route
- PMR Access

Access for reduced mobility visitors:
**PORTE DES LIONS,
RUE AUGUSTIN THIERRY
37400 AMBOISE**
GPS : N.47.413144 / E.O. 988904



Promotion & Bookings

promotion@chateau-amboise.com

Services +, Events & Presales

Sandrine Goudeau – commercial@chateau-amboise.com

Press

Samuel Buchwalder – samuel.buchwalder@chateau-amboise.com

Direction

Marc Métay & Lucile Hervet



CHÂTEAU ROYAL D'AMBOISE

Montée de l'Emir Abd el Kader
37400 Amboise

Tél. 33/(0)2 47 57 00 98
contact@chateau-amboise.com
www.chateau-amboise.com

